

|  |            |                                 |                                   |
|--|------------|---------------------------------|-----------------------------------|
| 14   | 15         | 16                              |                                   |
| REFERENCE DRAWING  |            | DWG NO.                         | REV.                              |
| General Site Layout  |            | EL027-000-ED-CI-DWG-520         | R2                                |
| Hazard Schedule and Source List  |            | EI027-000-ED-SA-LI-001          | R0                                |
|  |            |                                 |                                   |
| NOTES :  |            |                                 |                                   |
| 1- THE DRAWING IS BASED ON API-RP-505.   |            |                                 |                                   |
| 2- ELECTRICAL EQUIPMENT INSIDE THE BATTERY ROOM SHOULD BE CERTIFIED FOR ZONE 1 , GAS GROUP IIC, TEMPERATURE CLASS T3.  |            |                                 |                                   |
|  |            |                                 |                                   |
| LEGENDS :  |            |                                 |                                   |
| <div><div></div>NON-HAZARDOUS AREA (SAFE)</div> <div><div></div>ZONE 0</div> <div><div></div>ZONE 1<br/>GENERAL DEFINITION A ZONE IN WHICH AN EXPLOSIVE GAS/AIR MIXTURE IS LIKELY TO OCCUR IN NORMAL OPERATION</div> <div><div></div>ZONE 2<br/>GENERAL DEFINITION A ZONE IN WHICH AN EXPLOSIVE GAS/AIR MIXTURE IS NOT LIKELY TO OCCUR AND IF OCCURS, IT WILL ONLY EXIST FOR SHORT TIME</div> <div><div></div>ZONE 2 (EXTENSION)</div> |            |                                 |                                   |
|  |            |                                 |                                   |
|  |            |                                 |                                   |
| R1   | 03-10-2020 | APPROVED FOR CONSTRUCTION (AFC) | M.ASHGARNEJAD S.BEHNIAFAR R.MEMAR |
| R0   | 11-08-2020 | ISSUED FOR APPROVAL (IFA)       | M.ASHGARNEJAD S.BEHNIAFAR R.MEMAR |
| REV.   | ISSUE DATE | DESCRIPTION                     | PREPARED CHECKED APPROVED         |
| CLIENT   |            |                                 |                                   |
| <div><div></div><div>پتروشیمی توسعه پارک<br/>صنعتی گوهر اصف</div></div>  |            |                                 |                                   |
| CONSULTING ENGINEER  |            |                                 |                                   |
| BINA EPC CONTRACTOR CO.  |            |                                 |                                   |
| PROJECT: STYRENE PARK OFFSITE  |            |                                 |                                   |
| DRAWING TITLE: HAZARDOUS EQUIPMENT LAYOUT  |            |                                 |                                   |
| DRAWING NO.  |            | REV.                            | SIZE                              |
| EI027-000-ED-SA-LAY-022  |            | R1                              | A3                                |
|  |            | SCALE                           | SHEET                             |
|  |            | N/S                             | 1 of 3                            |
| 14   | 15         | 16                              |                                   |

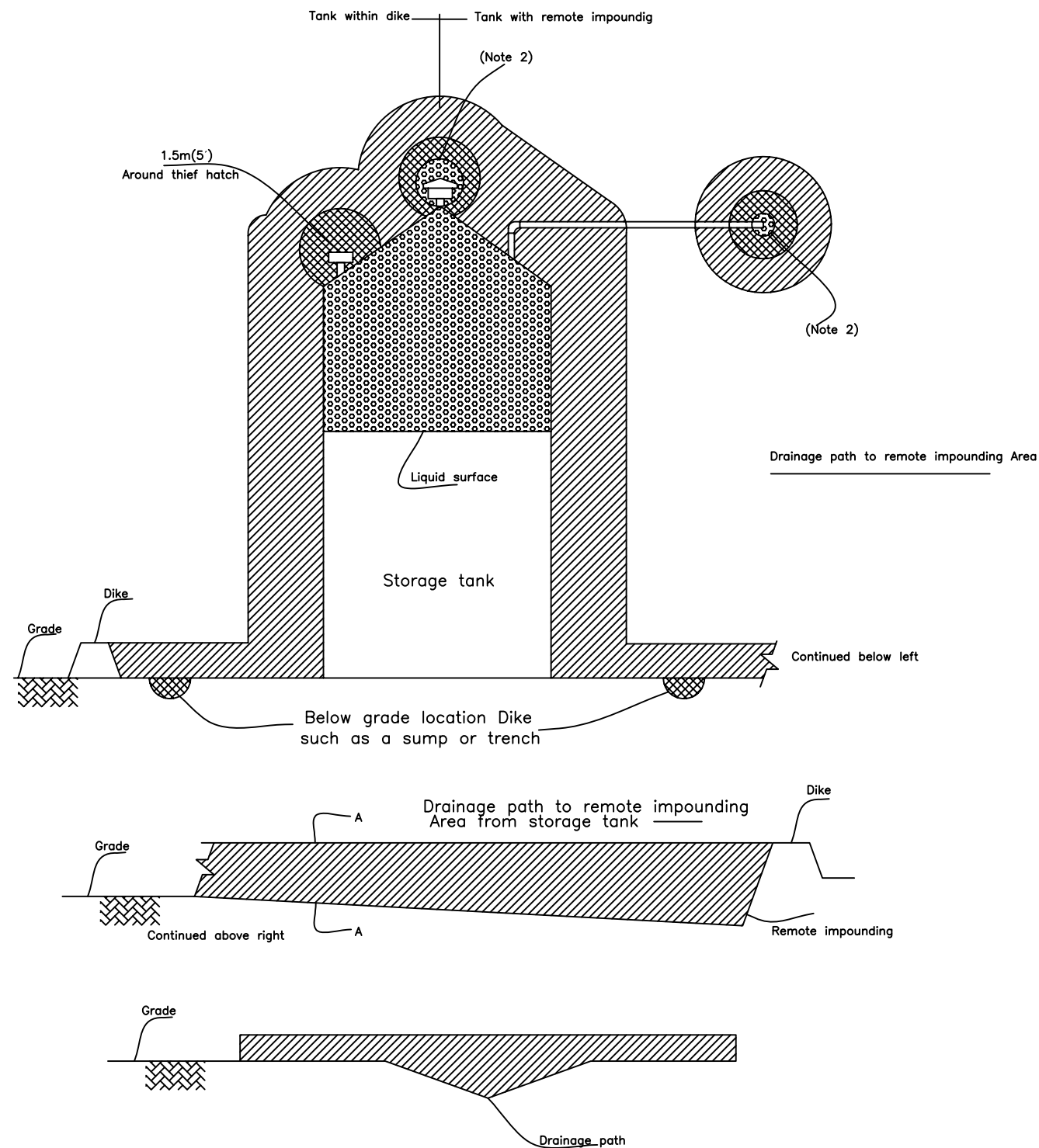


FIGURE 6 \_FIXED ROOF FLAMMABLE LIQUID STORAGE TANK IN A NONENCLOSED, ADEQUATELY VENTILATED AREA

| 14                              |  | 15                     |  | 16   |  |
|---------------------------------|--|------------------------|--|------|--|
| REFERENCE DRAWING               |  | DWG NO.                |  | REV. |  |
| Hazard Schedule and Source List |  | EI027-000-ED-SA-LI-001 |  | R0   |  |
|                                 |  |                        |  | A    |  |
|                                 |  |                        |  | B    |  |
|                                 |  |                        |  | C    |  |
|                                 |  |                        |  | D    |  |
|                                 |  |                        |  | E    |  |
|                                 |  |                        |  | F    |  |
|                                 |  |                        |  | G    |  |
|                                 |  |                        |  | H    |  |
|                                 |  |                        |  | K    |  |
|                                 |  |                        |  | L    |  |
|                                 |  |                        |  | M    |  |

NOTES :  
1- THE DRAWING IS BASED ON API-RP-505.  
2- AN AREA 0.5 M AROUND VENTS IS CLASSIFIED ZONE0.

LEGENDS :  

NON-HAZARDOUS AREA (SAFE)  
ZONE 0  
ZONE 1  
GENERAL DEFINITION A ZONE IN WHICH AN EXPLOSIVE GAS/AIR MIXTURE IS LIKELY TO OCCUR IN NORMAL OPERATION  
ZONE 2  
GENERAL DEFINITION A ZONE IN WHICH AN EXPLOSIVE GAS/AIR MIXTURE IS NOT LIKELY TO OCCUR AND IF OCCURS, IT WILL ONLY EXIST FOR SHORT TIME  
ZONE 2 (EXTENSION)

|      |            |                                 |               |             |          |
|------|------------|---------------------------------|---------------|-------------|----------|
|      |            |                                 |               |             |          |
| R1   | 03-10-2020 | APPROVED FOR CONSTRUCTION (AFC) | M.ASHGARNEJAD | S.BEHNIAFAR | R.MEMAR  |
| R0   | 11-08-2020 | ISSUED FOR APPROVAL (IFA)       | M.ASHGARNEJAD | S.BEHNIAFAR | R.MEMAR  |
| REV. | ISSUE DATE | DESCRIPTION                     | PREPARED      | CHECKED     | APPROVED |

CLIENT  

پتروشیمی توسعه پارک  
صنعتی گوهرداران

CONSULTING ENGINEER  

BINA EPC CONTRACTOR CO.

PROJECT: STYRENE PARK OFFSITE

DRAWING TITLE: HAZARDOUS EQUIPMENT LAYOUT

|                         |  |      |      |       |        |
|-------------------------|--|------|------|-------|--------|
| DRAWING NO.             |  | REV. | SIZE | SCALE | SHEET  |
| EI027-000-ED-SA-LAY-022 |  | R1   | A3   | N/S   | 2 of 3 |

|   |            |                                 |                        |             |          |
|---|------------|---------------------------------|------------------------|-------------|----------|
| 14  |            | 15                              |                        | 16          |          |
| REFERENCE DRAWING   |            |                                 | DWG NO.                |             | REV.     |
| Hazard Schedule and Source List   |            |                                 | EI027-000-ED-SA-LI-001 |             | R0       |
|   |            |                                 |                        |             |          |
|   |            |                                 |                        |             |          |
|   |            |                                 |                        |             |          |
|   |            |                                 |                        |             |          |
|   |            |                                 |                        |             |          |
| NOTES :   |            |                                 |                        |             |          |
| 1. THE DRAWING IS BASED ON API-RP-506   |            |                                 |                        |             |          |
| 2. THE INTERIOR OF THE VENT PIPE IS ZONE 1.CROSS HATCHING IS OMITTED FOR DRAWING CLARITY.   |            |                                 |                        |             |          |
| 3. THE INTERIOR OF THE VENT PIPE IS ZONE 0.CROSS HATCHING IS OMITTED FOR DRAWING CLARITY.   |            |                                 |                        |             |          |
| LEGENDS :   |            |                                 |                        |             |          |
| <div><div></div><div>NON-HAZARDOUS AREA (SAFE)</div></div> <div><div></div><div>ZONE 0</div></div> <div><div></div><div>ZONE 1<br/>GENERAL DEFINITION A ZONE IN WHICH AN EXPLOSIVE GAS/AIR MIXTURE IS LIKELY TO OCCUR IN NORMAL OPERATION</div></div> <div><div></div><div>ZONE 2<br/>GENERAL DEFINITION A ZONE IN WHICH AN EXPLOSIVE GAS/AIR MIXTURE IS NOT LIKELY TO OCCUR AND IF OCCURS, IT WILL ONLY EXIST FOR SHORT TIME</div></div> <div><div></div><div>ZONE 2 (EXTENSION)</div></div> |            |                                 |                        |             |          |
|   |            |                                 |                        |             |          |
|   |            |                                 |                        |             |          |
|   |            |                                 |                        |             |          |
|   |            |                                 |                        |             |          |
|   |            |                                 |                        |             |          |
|   |            |                                 |                        |             |          |
| R1  | 03-10-2020 | APPROVED FOR CONSTRUCTION (AFC) | MASGHARNEJAD           | S.BEHNIAFAR | R.MEMAR  |
| RO  | 11-08-2020 | ISSUED FOR APPROVAL (IFA)       | MASGHARNEJAD           | S.BEHNIAFAR | R.MEMAR  |
| REV.  | ISSUE DATE | DESCRIPTION                     | PREPARED               | CHECKED     | APPROVED |
| CLIENT  |            |                                 |                        |             |          |
| <div><div></div><div>پتروشیمی توسعه پارک<br/>صنعتی گوهرداران</div></div>  |            |                                 |                        |             |          |
| CONSULTING ENGINEER   |            |                                 |                        |             |          |
| BINA EPC CONTRACTOR CO.   |            |                                 |                        |             |          |
| <div><div></div><div></div></div>   |            |                                 |                        |             |          |
| PROJECT: STYRENE PARK OFFSITE   |            |                                 |                        |             |          |
| DRAWING TITLE: HAZARDOUS EQUIPMENT LAYOUT   |            |                                 |                        |             |          |
| DRAWING NO.   |            |                                 | REV.                   | SIZE        | SHEET    |
| EI027-000-ED-SA-LAY-022   |            |                                 | R1                     | A3          | 3 of 3   |
| 14  |            | 15                              |                        | 16          |          |